



# Colors & Materials 2023/2024



*all models*

*hull - exterior  
gelcoat & painted*

**FJORD** 

*gelcoat*

*painted*



*standard signal white*

*The hull can be painted in almost every colour (metallic / non metallic) according to the Alexseal Yacht Coatings Selection. Please ask your dealer.*

all models

waterline – exterior  
gelcoat & painted

**FJORD** 

gelcoat

painted



standard 38 xpress  
standard 38 open  
standard 44 open  
standard 44 coupé dark grey

standard 41 XP  
standard 41 XL  
standard 53 XL jet black

The waterline can be painted in almost every colour (metallic / non metallic) according to the Alexseal Yacht Coatings Selection. Please ask your dealer.

all models

dashboard - exterior  
gelcoat & painted

**FJORD** 

gelcoat

painted



standard signal white

The steering can be painted in almost every colour (metallic / non metallic) according to the Alexseal Yacht Coatings Selection. Please ask your dealer.

galley - exterior  
gelcoat & painted

**FJORD** 

all models

gelcoat

painted



standard 53 XL  
standard 44 open  
standard 41 XL  
standard 41 XP  
standard 44 coupé  
option 38 open  
option 38 xpress signal white

The galley can be painted in almost every colour (metallic / non metallic) according to the Alexseal Yacht Coatings Selection. Please ask your dealer.

all models

t-top & coach roof - exterior painted

**FJORD** 



standard 44 open  
option 38 open  
option 44 coupé  
option 38 xpress jet black

standard 53 XL  
standard 44 coupé  
standard 41 XL  
standard 41 XP  
option 38 open  
option 38 xpress signal white

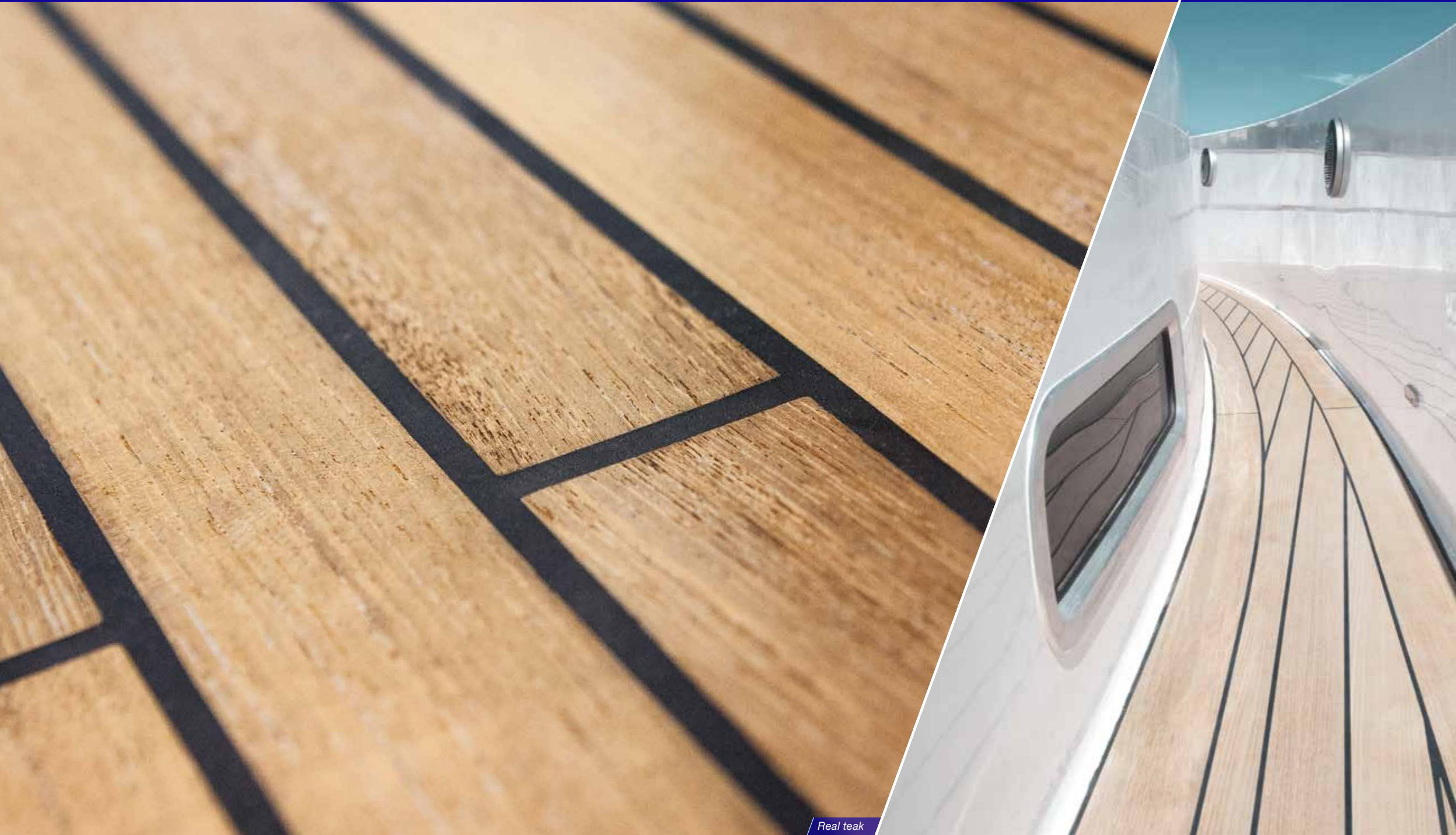
option 53 XL / 44 open / 41 XL / 41 XP / 38 open / 38 xpress

The T-Top can be painted in almost every colour (metallic / non metallic) according to the Alexseal Yacht Coatings Selection. Please ask your dealer.

option 53 XL  
option 44 open  
option 44 coupé  
option 41 XL  
option 41 XP  
option 38 open  
option 38 xpress

flooring - exterior  
Real teak

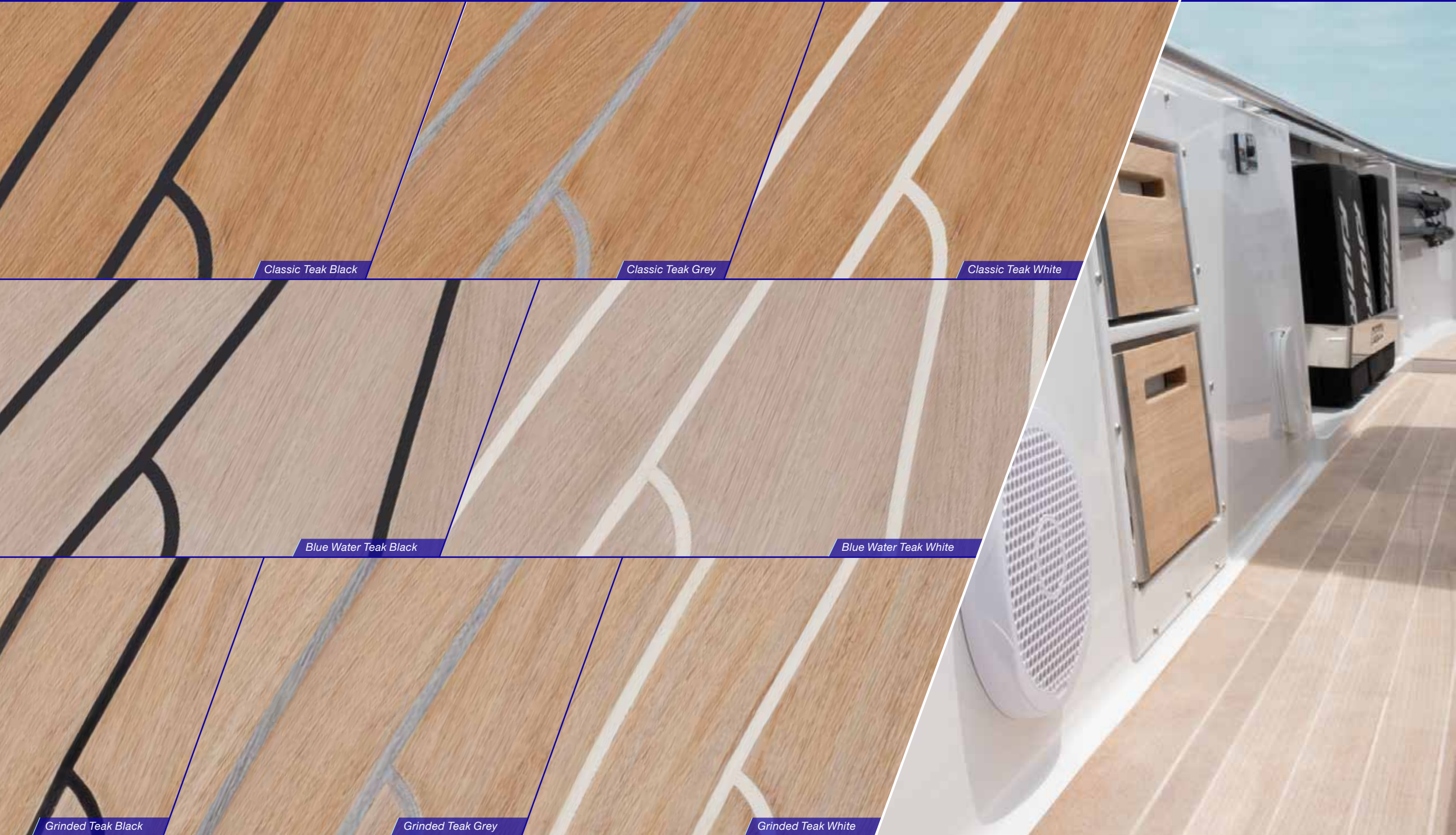
**FJORD** 



Real teak

standard 53 XL  
standard 44 open  
standard 44 coupé  
standard 41 XL  
standard 41 XP  
option 38 open  
option 38 xpress

flooring - exterior  
synthetic teak



Classic Teak Black

Classic Teak Grey

Classic Teak White

Blue Water Teak Black

Blue Water Teak White

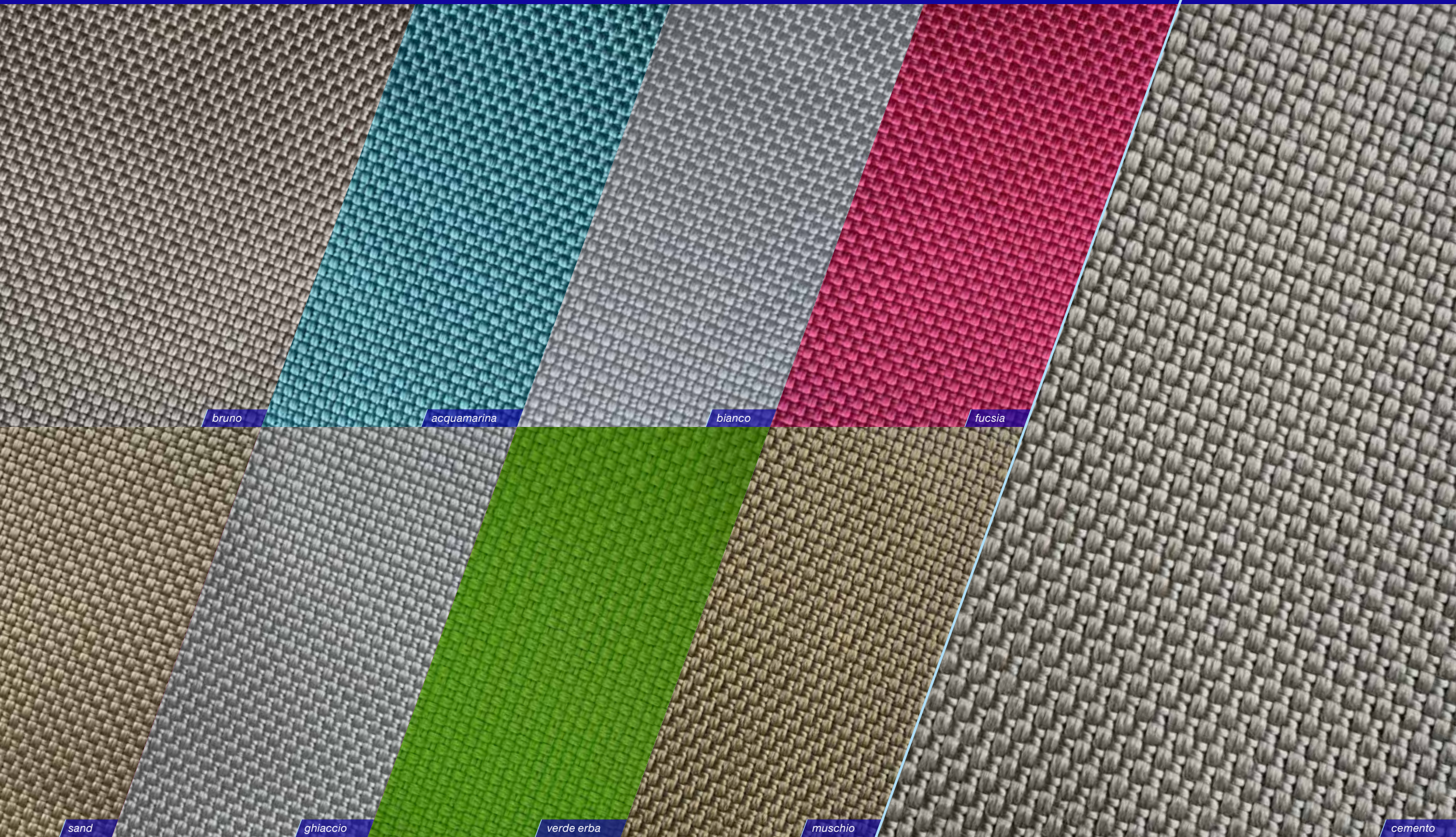
Grinded Teak Black

Grinded Teak Grey

Grinded Teak White



(Only with layout F4, F5, F8)



bruno

acquamarina

bianco

fucsia

sand

ghiaccio

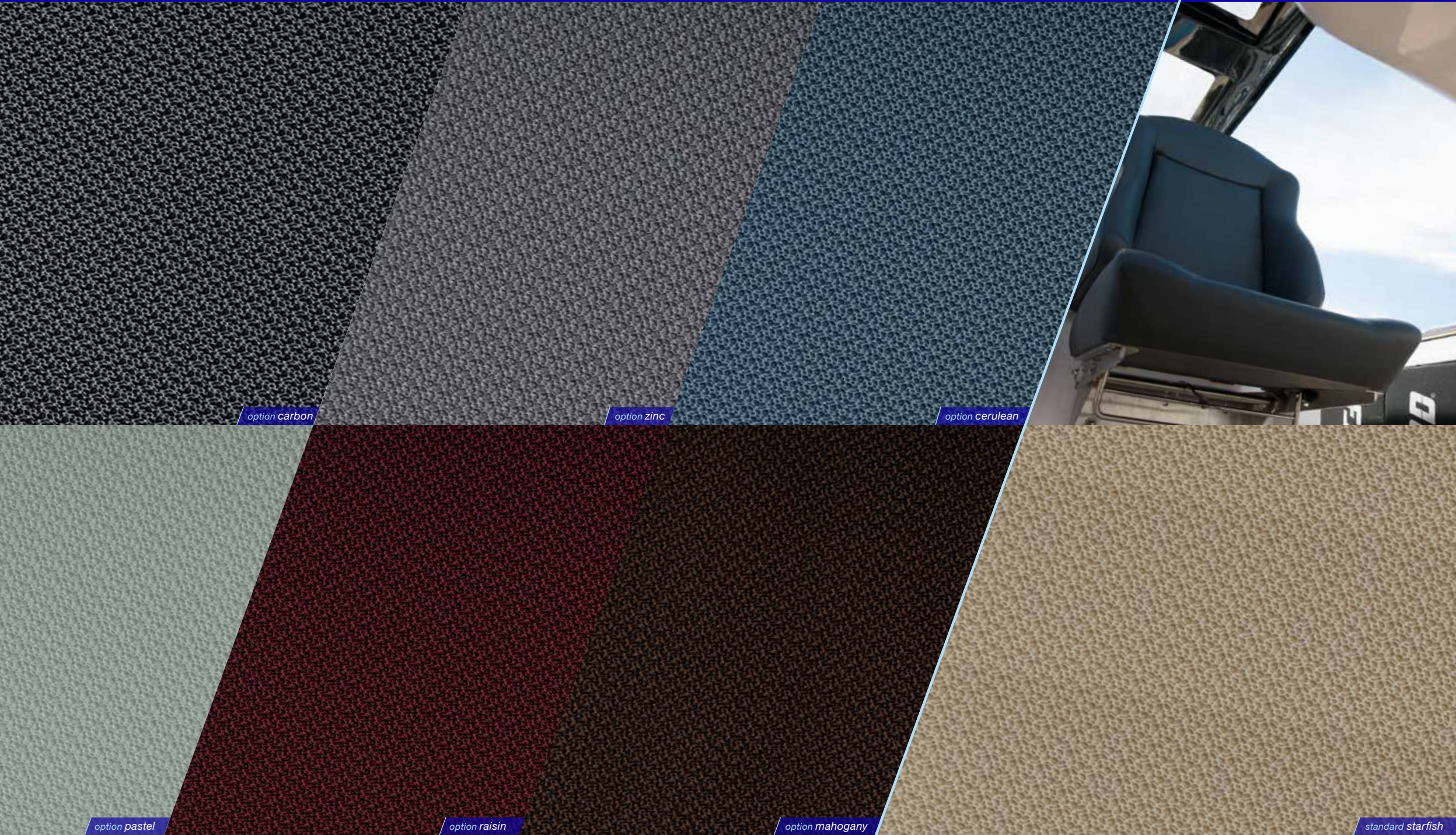
verde erba

muschio

cemento

all models

*upholstery and helmsman seats - exterior  
hitch*



option carbon

option zinc

option cerulean

option pastel

option raisin

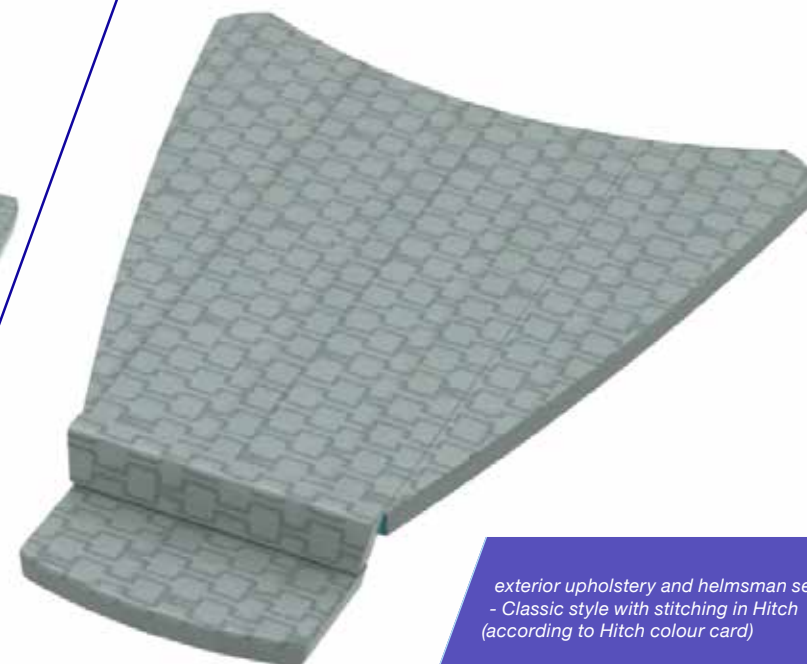
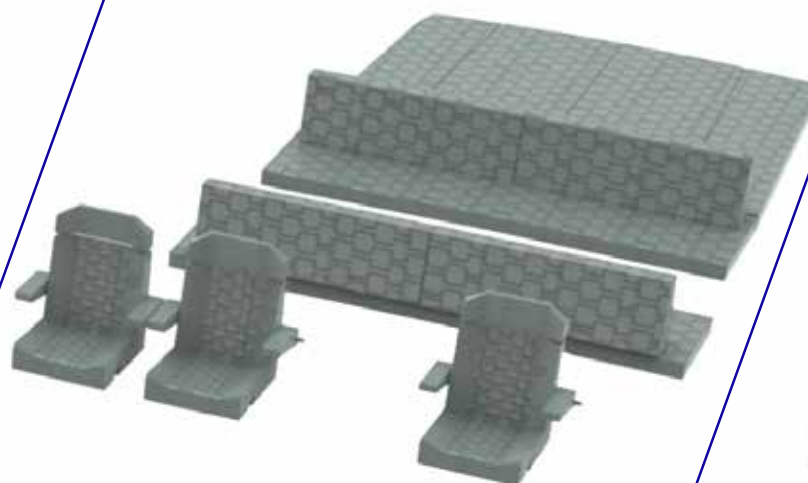
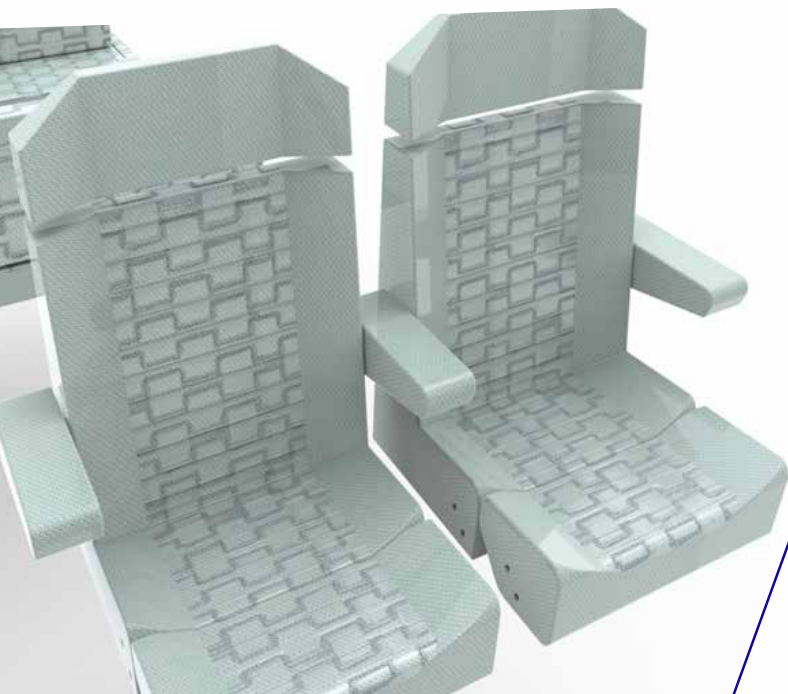
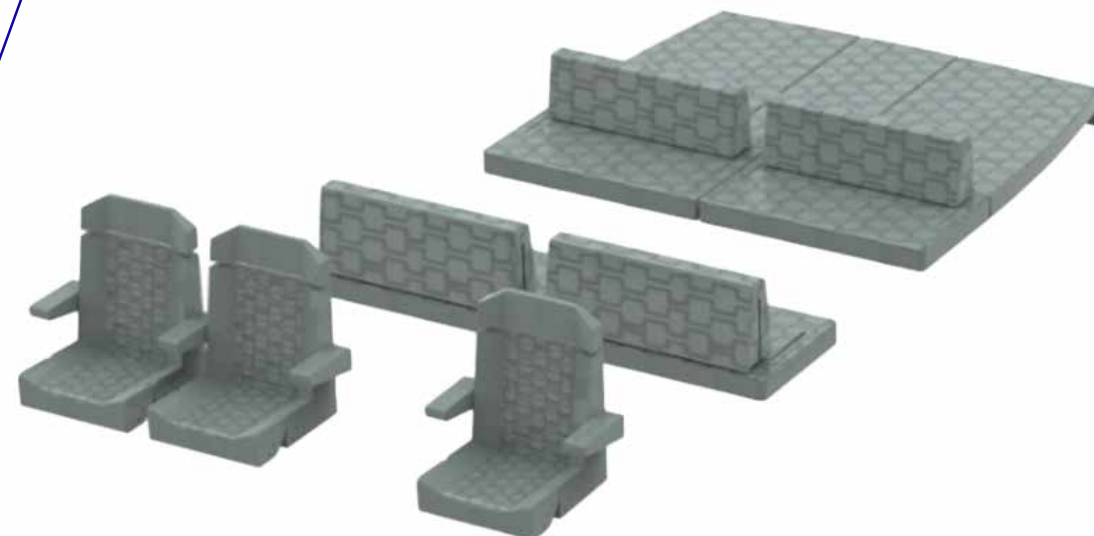
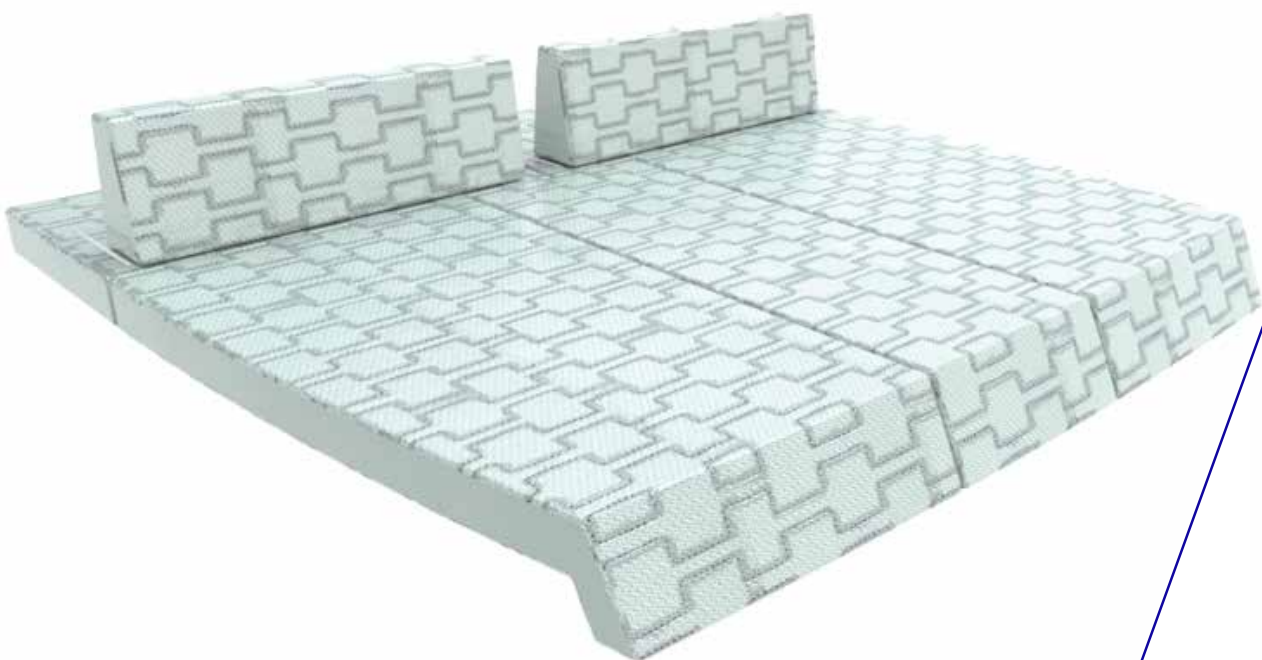
option mahogany

standard starfish



option 53 XL  
option 41 XL  
option 41 XP

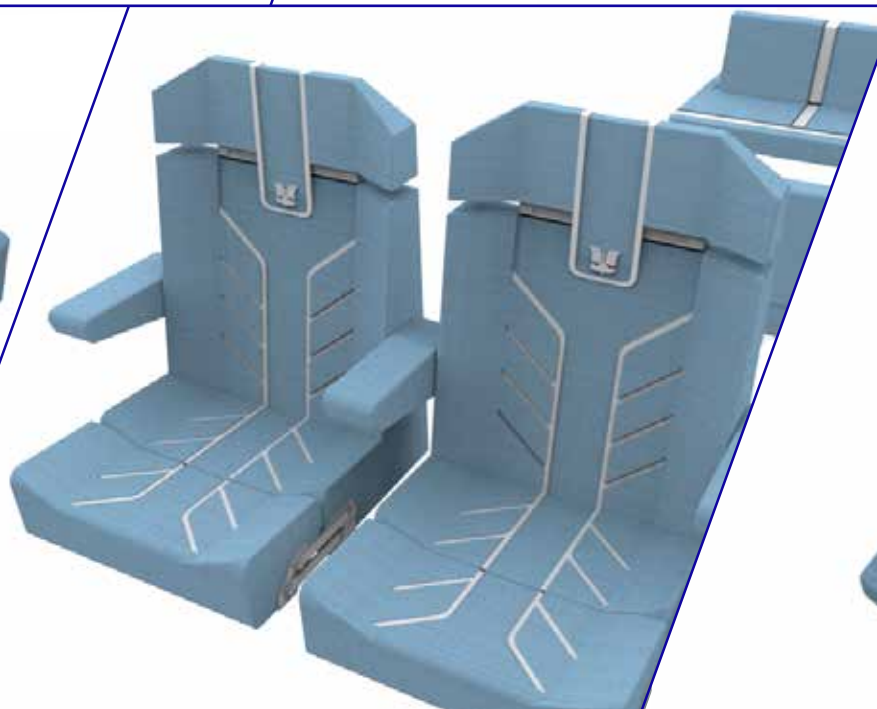
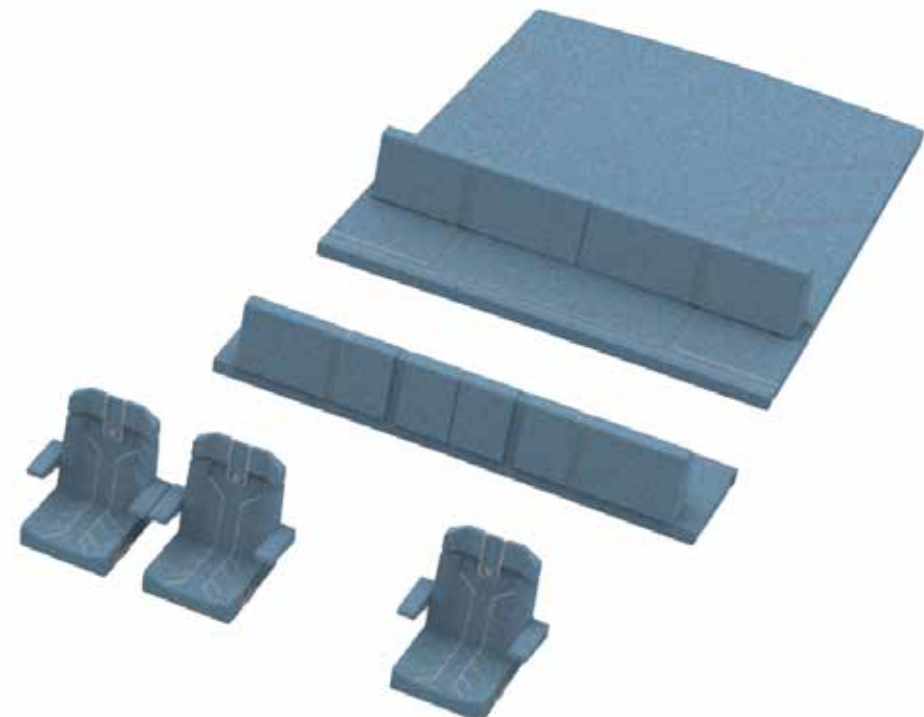
*upholstery and helmsman seats - exterior  
hitch - classic style*



*exterior upholstery and helmsman seats  
- Classic style with stitching in Hitch  
(according to Hitch colour card)*

- option 53 XL
- option 41 XL
- option 41 XP

*upholstery and helmsman seats - exterior  
hitch - sport style*

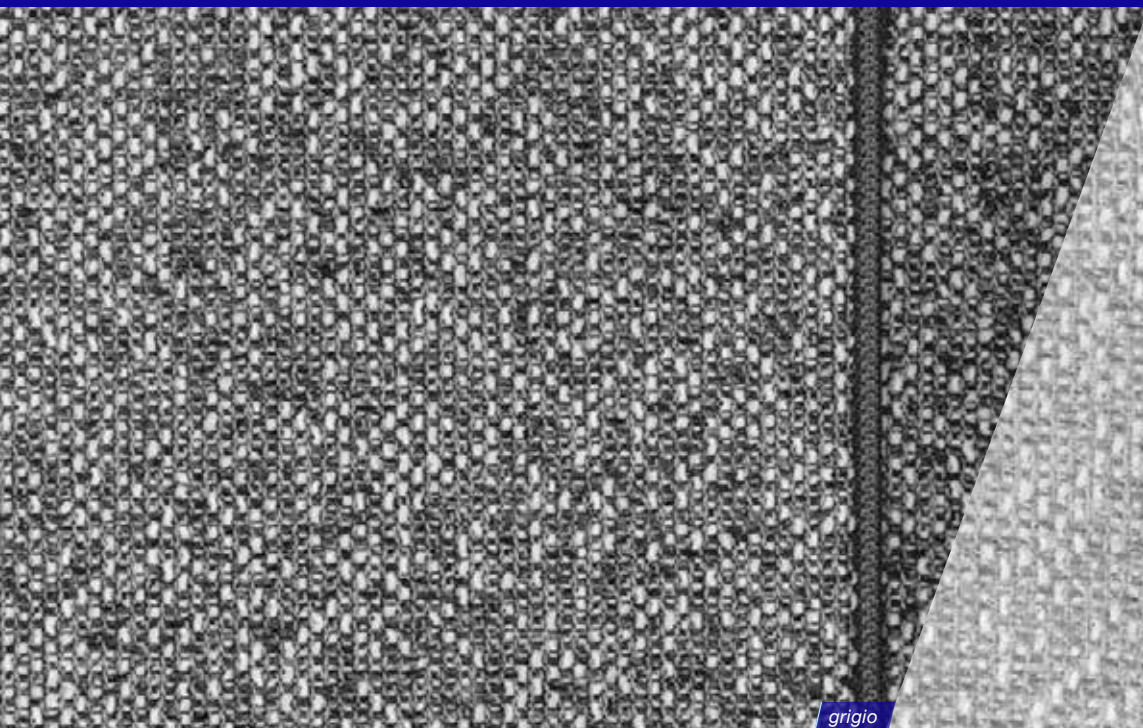


*Exterior upholstery and helmsman seats - Sport style with bicolour material: main surface in Hitch (according to Hitch colour card) and ornament stripes in Hitch (according to Hitch colour card)*

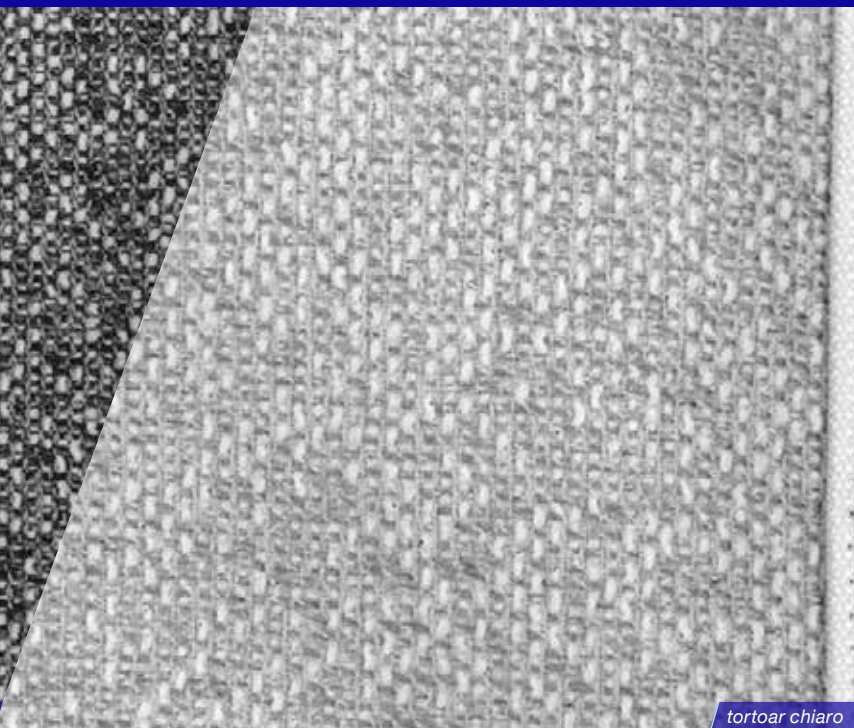
option all models

*upholstery and helmsman seats - exterior  
dolce vita*

**FJORD** 



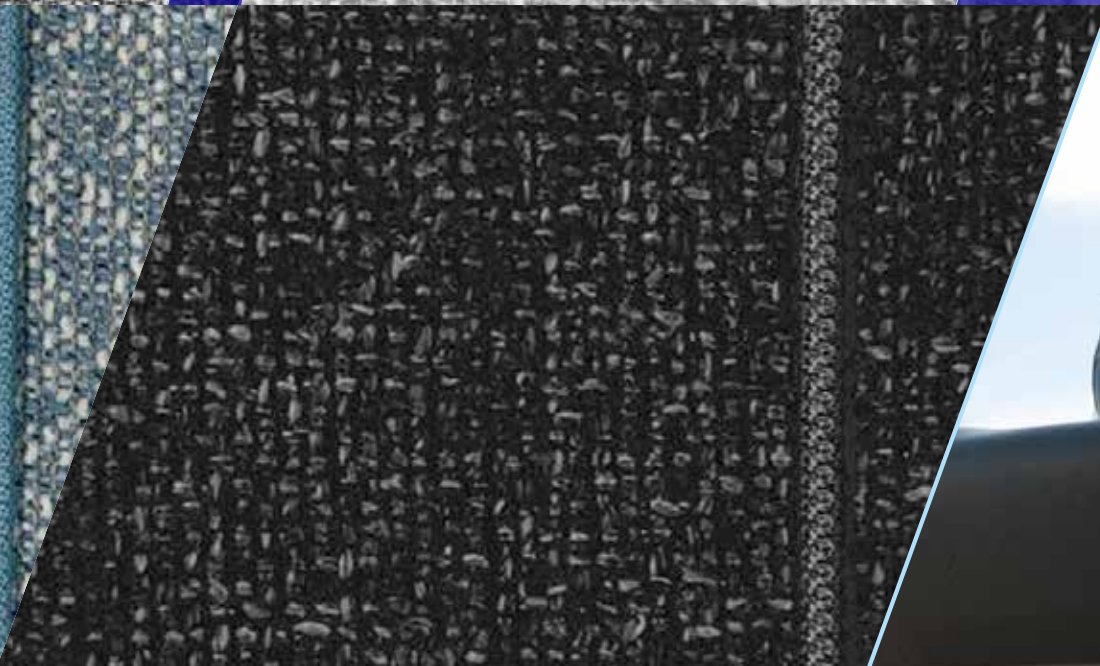
grigio



tortora chiaro



fredda



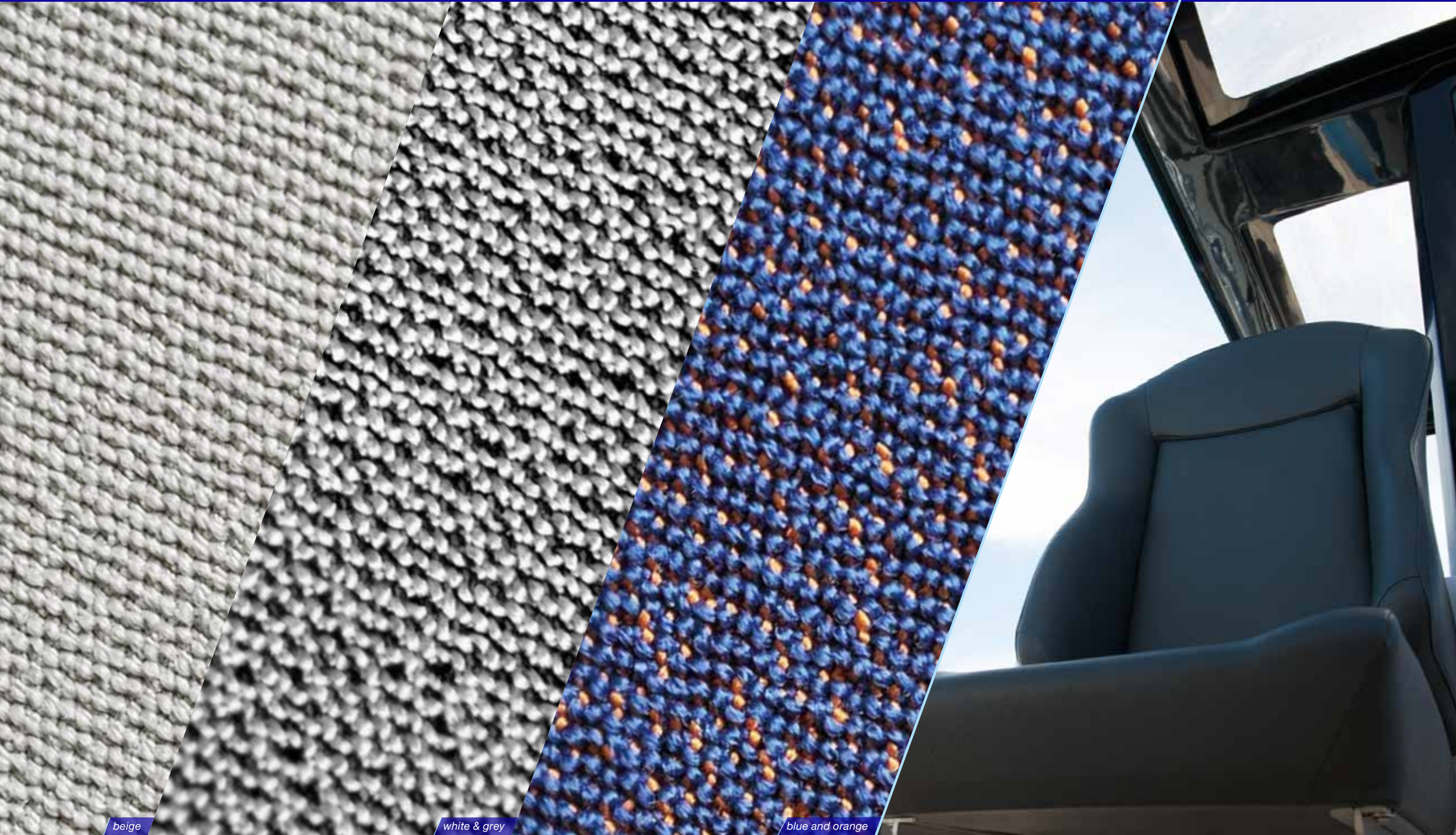
antracita



*upholstery package and helmsman seats - exterior and interior*  
ECO

**FJORD** 

*option all models*



beige

white & grey

blue and orange

all models

upholstery - interior  
smooth



option taupe

option silver

option stone

option charcoal

option denim

standard Porto Bello cream

option all models

upholstery - interior  
dash



glacier

oyster

muscat

graphite

cliffside



option all models

upholstery - interior  
padua



bronze

rock island

almond

black truffle

husky

option all models

upholstery - interior  
scoop leather



clay

mud

ivory

amber

basalt

all models

Marine optimized real wood veneer from ALPI.

standard warm mahogany

option lisboa chestnut

option atlanta walnut

option milano oak

warm mahogany and milano oak are available in satin finish.  
53 XL: atlanta walnut and lisboa chestnut can be ordered in satin or high gloss finish.



option 53 XL  
option 44 open  
option 44 coupé  
option 41 XL  
option 41 XP

furniture – interior  
painted

**FJORD** 

53 XL  
44 open  
44 coupé  
41 XL  
41 XP  
RAL 9003 signal white /  
high gloss finish

44 open  
44 coupé  
41 XL  
41 XP  
RAL 7047 telegrey /  
high gloss finish



53 XL  
44 open  
44 coupé  
41 XL  
41 XP

flooring - interior  
wood



standard pale acacia

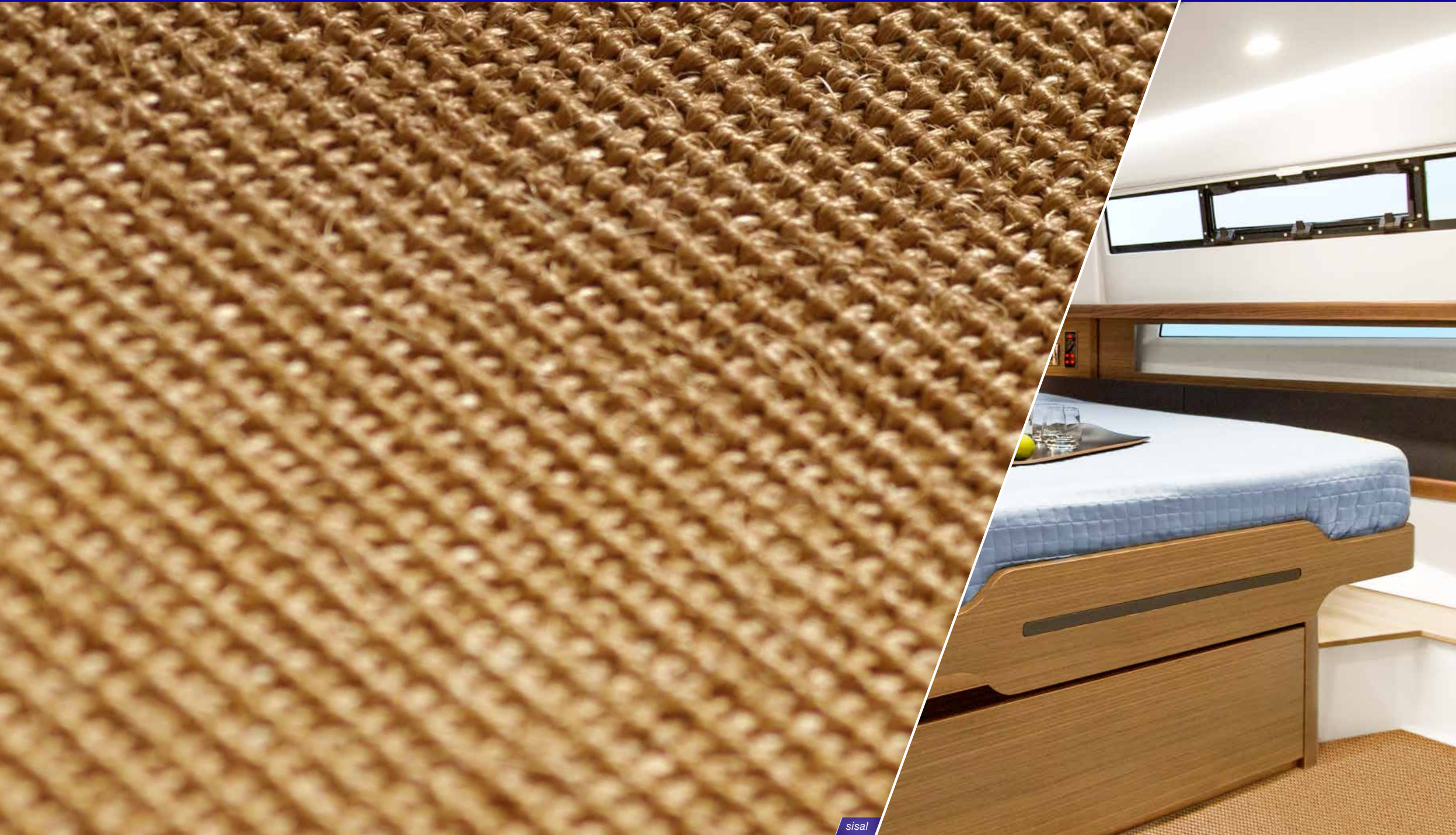
option eternal oak

option basque oak

option noce nero

option 53 XL  
option 44 open  
option 44 coupé  
option 41 XL  
option 41 XP  
standard 38 open  
standard 38 xpress

carpets - interior  
sisal



sisal

option all models

carpets - interior



greige



pebble



light grey



graphit



*worktop in head - interior*

**FIORD** 

*all models*

standard 53 XL  
standard 41 XL  
standard 41 XP  
standard 38 open  
standard 38 xpress **pebble grey**

standard 44 open  
standard 44 coupé **royal quartz**





*covers – exterior*

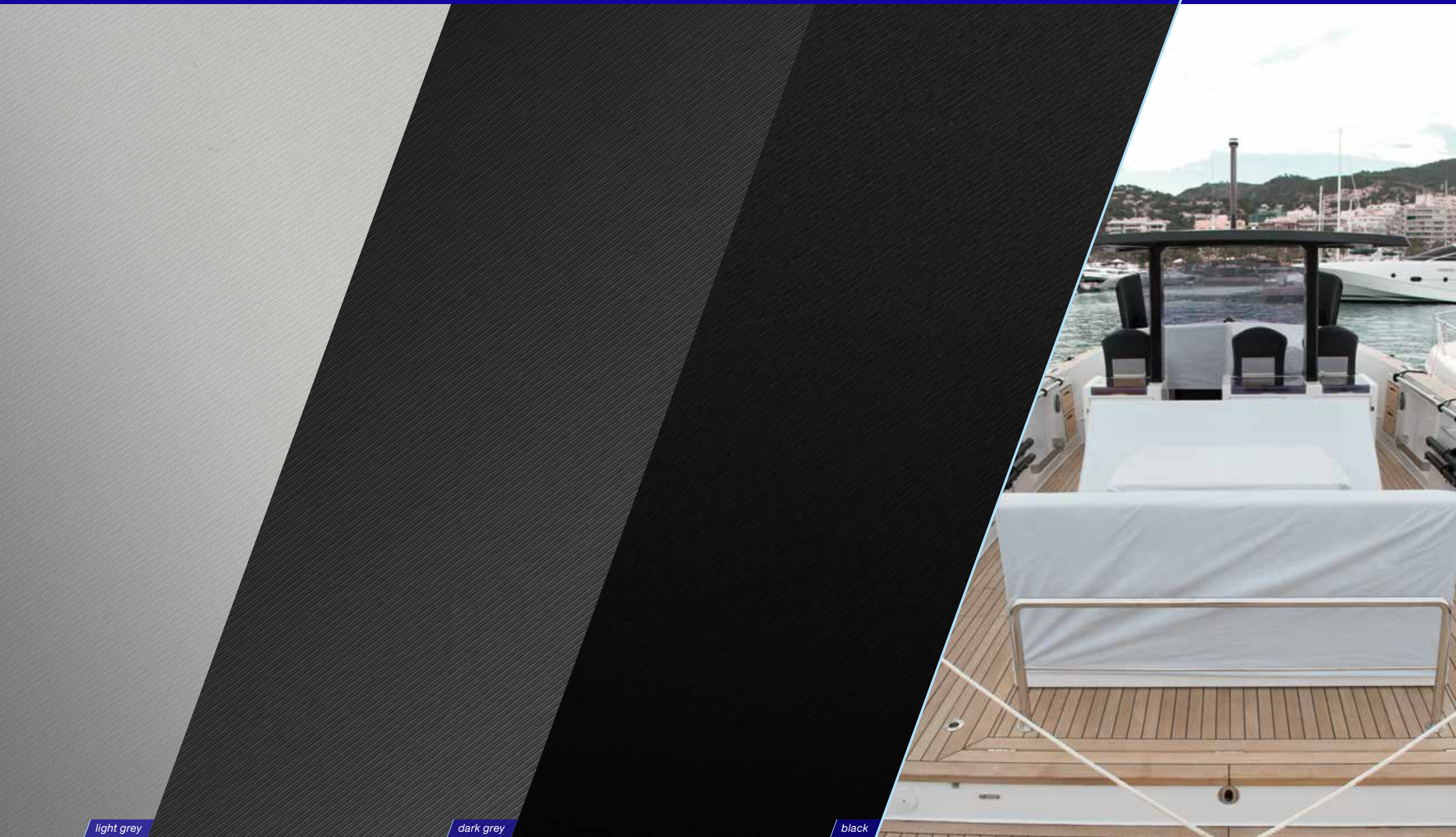


*Cover option for all models*

*T-top canopy housing including connection to windshield:*

*option for 41 XL, 41 XP and 53 XL*

*Cockpit canopy option for 44 coupé*



*light grey*

*dark grey*

*black*

Fiberglass decor part:  
White gelcoat (standard)

Soft material horizontal  
surface around the bed in the  
owner cabin and vertical panels  
around the bed in owner and  
guest cabin: Diamond snow  
(standard)

\*Floor: pale acacia (standard)

\*Wood: warm mahogany  
(standard)

\*Fabric: portobello (standard)

colour: cream (standard)



\* All MODES are represented together with the architect selection of wood, floor and fabric. This selection is not binding, wood floor and fabric can be different but should be always selected one by one in the F41XL and F41XP pricelist

All MODES are represented together with the architect selection of wood, floor and fabric. This selection is not binding, wood floor and fabric can be different but should be always selected one by one in the F41XL and F41XP pricelist

Fiberglass decor part:  
painted, color matching with  
Alexseal, palma blue metallic  
(optional)

Soft material horizontal  
surface around the bed in the  
owner cabin and vertical panels  
around the bed in owner and  
guest cabin: Diamond snow  
(standard)

\*Floor: pale acacia (standard)

\*Wood: lisboa chestnut  
(optional)

\*Fabric: smooth – denim  
(optional)



POLAR mode

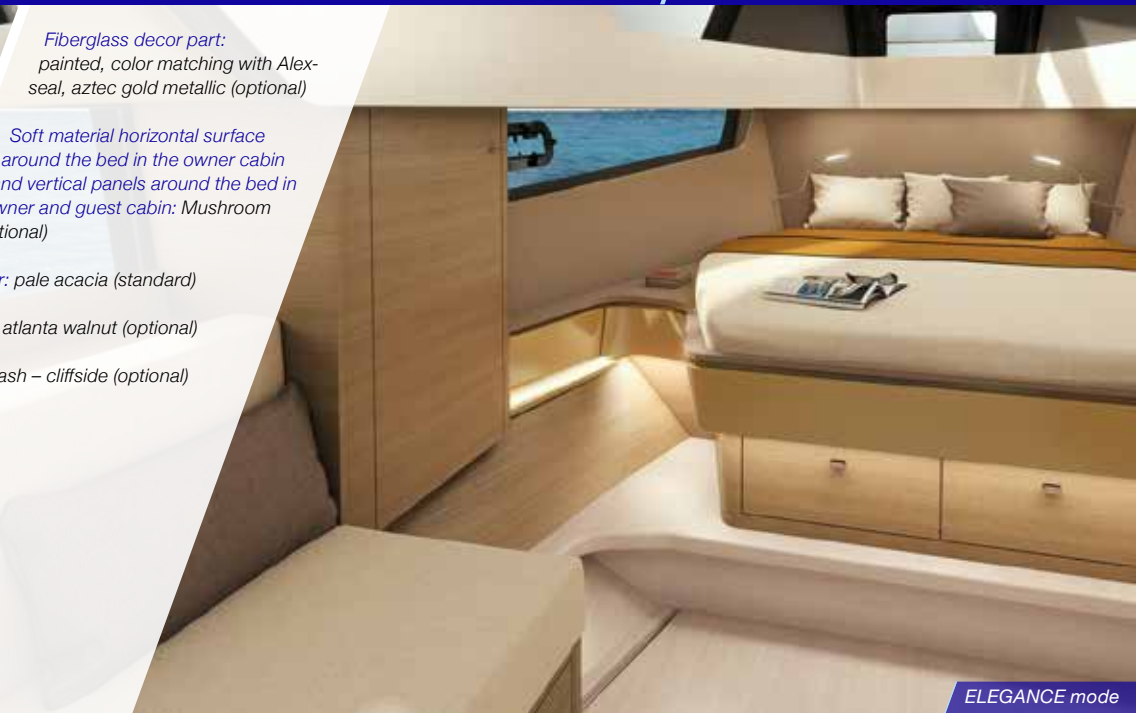
Fiberglass decor part:  
painted, color matching with Alex-  
seal, aztec gold metallic (optional)

Soft material horizontal surface  
around the bed in the owner cabin  
and vertical panels around the bed in  
owner and guest cabin: Mushroom  
(optional)

\*Floor: pale acacia (standard)

\*Wood: atlanta walnut (optional)

\*Fabric: dash – cliffside (optional)



ELEGANCE mode

Fiberglass decor part:  
painted, color matching with  
Alexseal, gold rush metallic  
(optional)

Soft material horizontal surface  
around the bed in the owner  
cabin and vertical panels around  
the bed in owner and guest cab-  
in: Diamond carbon (optional)

\*Floor: basque oak (optional)

\*Wood: lisboa chestnut  
(optional)

\*Fabric: smooth – charcoal  
(optional)



SPORT CHIC mode

Fiberglass decor part:  
painted, color matching with  
Alexseal, dark black metallic (optional)

Soft material horizontal surface  
around the bed in the owner cabin  
and vertical panels around the bed in  
owner and guest cabin: Diamond snow (standard)

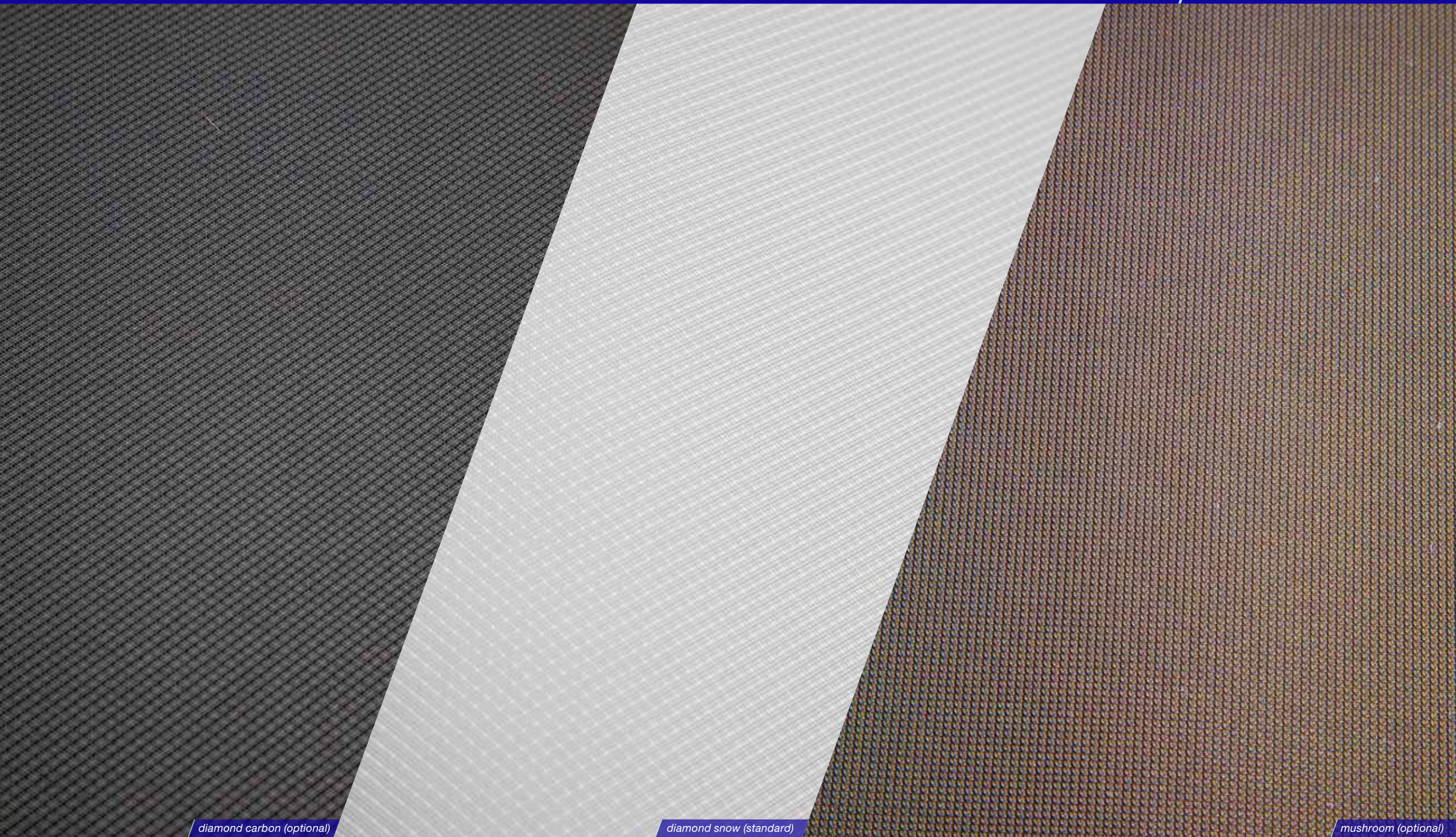
\*Floor: noce nero (optional)

\*Wood: milano oak (optional)

\*Fabric: smooth – Porto Bello cream  
(optional)



CLASSIC mode



*diamond carbon (optional)*

*diamond snow (standard)*

*mushroom (optional)*

[www.fjordboats.com](http://www.fjordboats.com)

**FJORD**   
*be unique*

