

**FJORD**   
*BE UNIQUE*



**44**  
*coupe*

44  
*coupé*

*BE* **UNIQUE**  
*MAKE EACH DAY LEGENDARY.*

---

Once again, FJORD reinvents the concept of the top-class powerboat. The FJORD 44 coupé features our visionary, expressive arc-saloon entirely made of glass. This air-conditioned superstructure keeps you comfortable come rain, shine or chill.

No doubt – it is always the right time to go out with your FJORD 44 coupé.

PASSIONATE FOR  
**POWER**



*36 KN*  
max. speed

*960 HP*  
with two engines

*360° PANORAMA*  
arc-saloon





---

The FJORD 44 coupé was developed with sheer enjoyment in mind. Gratification is instant – within fractions of a second, it transforms tremendous engine power into overwhelming emotions.



## *SET YOUR PULSE RACING*

---

There is no better entertainer than breathtaking speed. A triple pilot seat guarantees the driver is not the only one to experience this mighty rush of adrenaline.





## *FORMULA ONE FEELING*

The iconic dashboard delivers pure eye-candy and provides an intuitive connection to the exhilarating engine performance. Everything is perfectly aligned to the needs of the helmsman, positioned exactly where you expect it to be.



*STUNS WITH 360° VIEWS - THE*

# *ARC-SALOON*

---

Our arc-saloon fosters an atmosphere of pure indulgence. From the first moment on board, your family and friends will be captured by the combination of 360° views, generous height and luxurious furnishing.





*PERFECT CLIMATE  
IN ANY WEATHER*

---

Weather set fair? Sunroof and side doors are waiting to let in the sea breeze. Open the grand aft twin doors, and the saloon and cockpit become a single sunny living space. Thanks to aircon and many opening windows, you can create your ideal climate if you prefer staying inside.



THE WHOLE RANGE OF

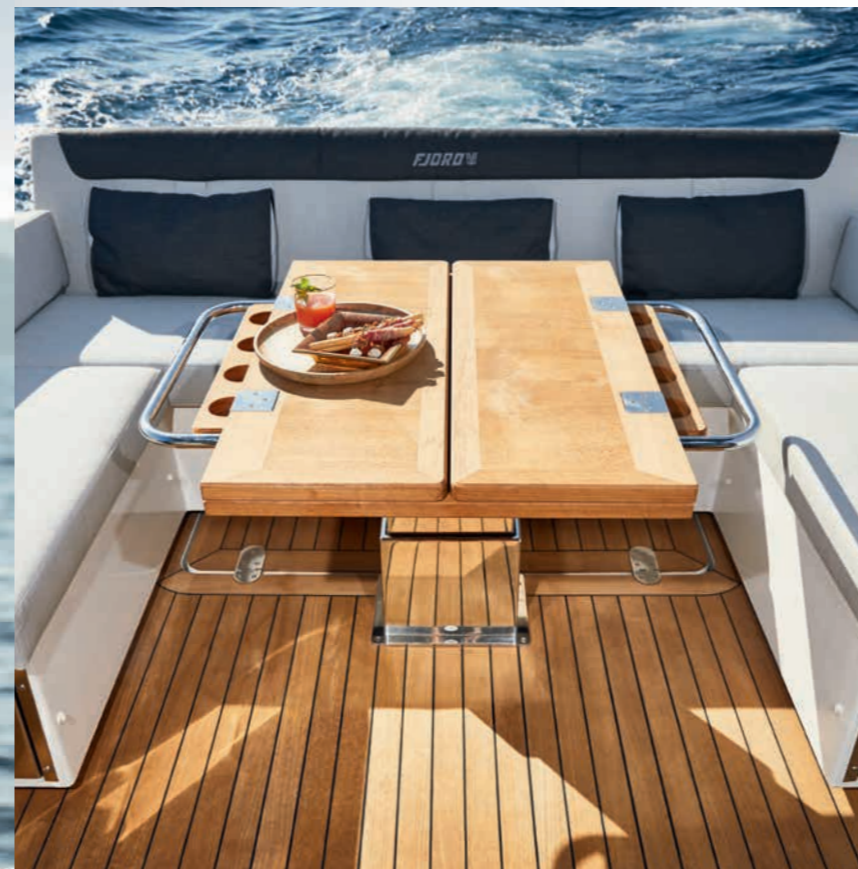
# PLEASURES



---

Catching the day's best rays on the sunpad, taking a refreshing swim in the ocean and enjoying a chilled refreshment before dinner – everything is designed to experience moments that should never end.





## *THE TASTE OF SUMMER*

Sun or shade? Exploratory dive or sweet idleness? Do whatever you feel like – the FJORD 44 coupé makes it a pleasure. The bathing platform, the versatile cockpit area and the sun loungers on the foredeck are waiting for you. It's all at your fingertips.



---

Celebrate the day. Enjoy fresh delicacies and a drop of something fine. All with your favourite tracks in high-end sound quality – and with your own underwater mood lighting.

*FORM FOLLOWS*

# *FASCINATION*

---

With her streamlined arc-saloon, the FJORD 44 coupé interprets the DNA of FJORD in its own way. The roofline, slightly rising to the rear, is an outstanding expression of what FJORD stands for: power, purism, pleasure.





## *AESTHETICS TO MOVE YOU*

Clean yet provocative lines make this boat a true FJORD. The arc-saloon owes its outstanding appearance not least to the masterly combination of glass, mirror-finish stainless steel and flawless composite work.



# YOU DEFINE YOUR APPEARANCE

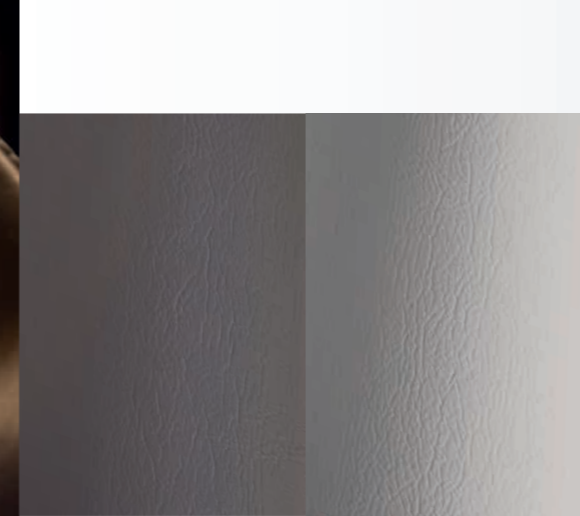
Among the many individual statements you make with your FJORD, the hull paint stands out most. That's why the entire range of colours is at your disposal, from prestigious to very extravagant hues. Based on your requirements, FJORD can also develop special coating effects or multicoloured hull designs.



The hull can be painted in almost any colour.



helm seat upholstery – synthetic & ultra leather



dark grey

light grey



red

mandarin orange

cream

The materials depicted are a tiny sampling of what is available. Your FJORD dealer will show you the entire choice.



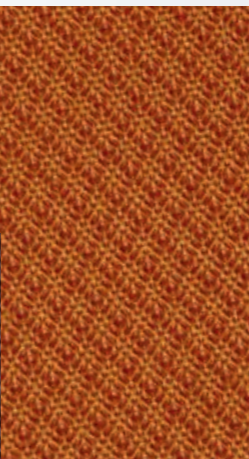
cubic cayenne

cockpit bench & sunbed upholstery

marine salt

olive grove

aubergine



rattan  
gulf stream  
lobster

matrix  
shore grey  
harbour seal  
gull wing



*SURROUNDED BY*  
**STYLE**

---

From the moment you enter the lower deck, you'll be struck by a sense of spaciousness and well-being. Clear, clean shapes and the use of exquisite materials embody the luxurious character of FJORD.





---

Attention to detail and exceptional comfort characterise the ambience in the bathroom – it is a singular invitation to unwind.  
Use the second cabin as storage space or give two extra guests an elegant home during their stay on the water.





sugar  
coffee

carpets

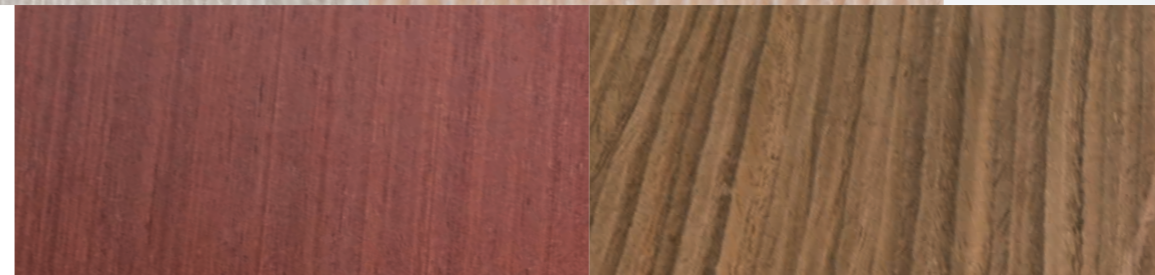
floor woods

basque oak  
noce nero



furniture wood

lisboa chestnut  
milano oak



warm mahogany  
atlanta walnut



upholstery –  
scoop leather

ivory  
clay  
mud  
amber  
basalt

# COMPOSE YOUR MASTERPIECE

The cabins on a FJORD are where the owner expresses all their personality - and therefore unique to each yacht. Handpicked from top-class manufacturers, the choice of fabrics, furniture woods, floorings and leathers spans an enormous range of styles and colours.



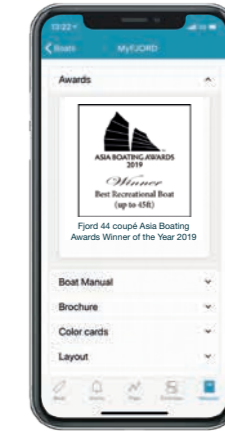
- FRIDGE**  
Turn on/off remotely
- LIGHTS**  
Turn on/off
- HATCH/DOOR SENSOR**  
Monitor unauthorised access
- SHORE POWER**  
Monitor connection
- ENGINE**  
Monitor activity
- MOTION SENSOR**  
Collision and grounding detection
- FUEL TANK**  
Monitor level
- WATER TANK**  
Monitor level
- BATTERY BANK**  
Monitor level
- GPS, WIND AND SPEED DATA**
- ANCHOR WINCH**  
Monitor activity
- BOW THRUSTER**  
Monitor activity
- BILGE PUMP**  
Monitor activity

\* Control and sensors depend on the configuration of your FJORD.

# MY FJORD SAFETY CLOUD

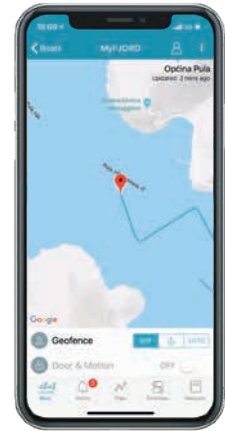
Everyone is talking about the digital future. But FJORD is implementing it – with the first cloud-based telematics system for serial production motor yachts. You can access your boat's technical data and functions live via the mobile app or via the owner's area at [www.fjordboats.com](http://www.fjordboats.com)

Intelligent functions such as BoatMonitoring, eLogbook and eServicebook enable you to keep an automatic logbook, stay on top of all servicing dates and monitor your yacht seamlessly.



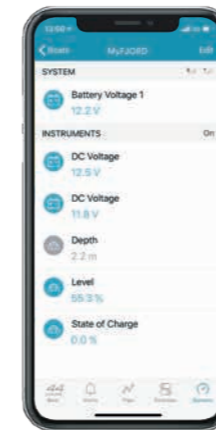
## MANUALS

All manuals and instructions within one app.



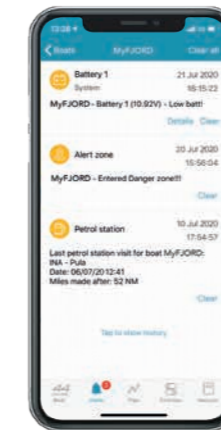
## POSITION

Track your position in real time.



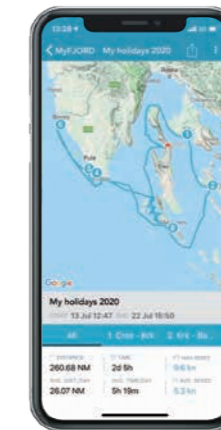
## SENSORS

Monitor your charge levels and devices.



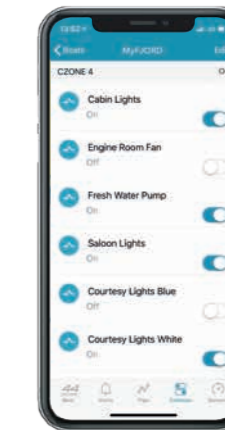
## ALARMS

Push notifications on current events.



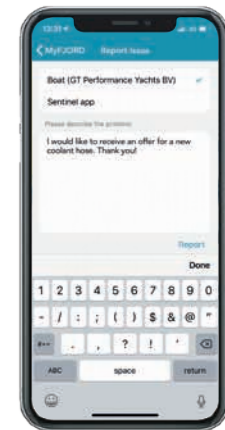
## TRIP LOG

Share your cruises and track data with friends.



## CONTROL

Operate your electronic devices by remote control.



## LIVE REPORT

Direct contact to your dealer for quick help.

# LAYOUT OF YOUR CHOICE



**MAIN DECK** with roof    **MAIN DECK**    **MAIN DECK** option    **CABIN CONCEPT** standard    **CABIN CONCEPT** option    **CABIN CONCEPT** option



## TECHNICAL DETAILS

<b>LOA</b>	13.45 m	44' 2"
<b>Hull length</b>	11.99 m	39' 4"
<b>Beam</b>	4.25 m	13' 11"
<b>Draught</b>	1.14 m	3' 9"
<b>Fresh water capacity</b>	295 l	65 UK gal
<b>Fuel capacity</b>	900 l	198 UK gal
<b>Displacement</b>	11.25 t	11.07 UK t

<b>CE Category</b>	B
<b>Max. persons</b>	12
<b>Engines Standard</b>	2x Volvo Penta IPS500 approx. 30 knots
<b>Engines Option</b>	2x Volvo Penta IPS650 approx. 36 knots
<b>Design</b>	Allseas Design & FJORD

\*All performance figures are given in good faith and are intended as an indication. These figures cannot be guaranteed as the top speed in particular is affected by the cleanliness of the hull, conditions of the propellers, weight carried and air/sea temperature. FJORD reserves the right to change specifications in line with the company policy of improvement through research and development. Errors and omissions expected. Please check with your dealer for a full list of inclusions. Above specifications are non-contractual. Valid from 01.01.2020

44  
coupé



THE

FOREVER  
ORIGINAL



**FJORD** 



*52 open*



*44 open*



*41 open*



*38 open*



*44 coupé*



*38 xpress*

FJORD / Ladebower Chaussee 11 / 17493 Greifswald

*This brochure is not contractual. The yachts depicted partly comprise special equipment not included in the standard scope of supply. Illustrations may not correspond with current versions. Subject to alterations in design and equipment without notice and errors excepted. Printing: Druckhaus Panzig. Design: smz GmbH. Photos: Nico Krauss.*

*CIBF44co/C/GB/0420*